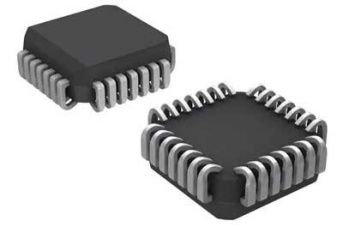



**SPLD ATF16V8B Family 250 Gates 8 Macro Cells 62MHz 5V 20-Pin PLCC Tube**



Images are for reference only

[Inquiry](#)

<b>Manufacturer:</b>	<a href="#">Microchip Technology, Inc</a>
<b>Package/Case:</b>	PLCC
<b>Product Type:</b>	Programmable Logic ICs
<b>RoHS:</b>	RoHS Compliant/Lead free 
<b>Lifecycle:</b>	Active

### General Description

250 gate, Standard power, Vcc 5V, Green package, Up to 16 Inputs, 8 I/Os, electrically erasable PLD

### Recommended For You

#### ATF22LV10C-10XU

Microchip Technology, Inc  
TSSOP24

#### AT17LV256-10PI

Microchip Technology, Inc  
DIP8

#### AT17C256-10PI

Microchip Technology, Inc  
DIP

#### ATF2500C-20KM

Microchip Technology, Inc  
JLCC44

#### AT17LV256-10NU

Microchip Technology, Inc  
SOP8

#### AT17LV256-10PU

Microchip Technology, Inc  
DIP8

#### ATF22V10CZ-12PC

Microchip Technology, Inc  
24-DIP0.3007.62mm

#### AT17LV256-10PC

Microchip Technology, Inc  
DIP8

#### AT17C256-10PU

Microchip Technology, Inc  
DIP-8

#### ATF22LV10CQZ-30SU

Microchip Technology, Inc  
SOIC

#### AT17C128-10PC

Microchip Technology, Inc  
DIP-8

#### ATF22V10CZ-15JI

Microchip Technology, Inc  
PLCC-28

**ATF1500AL-20JU**

Microchip Technology, Inc

PLCC44

**AT17LV128-10PI**

Microchip Technology, Inc

DIP8

**AT17LV65-10PC**

Microchip Technology, Inc

DIP8