
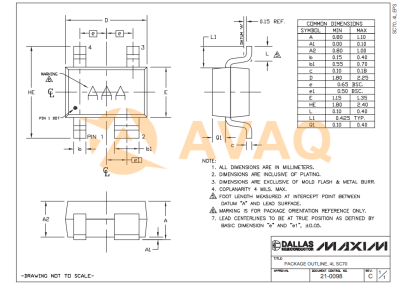


Current Limit SW 1-IN 1-OUT 2.3V to 5.5V 0.24A 4-Pin SC-70 T/R

Manufacturer:	<u>Analog Devices, Inc</u>
Package/Case:	SC70-4
Product Type:	Switches
RoHS:	RoHS Compliant/Lead free 
Lifecycle:	Active



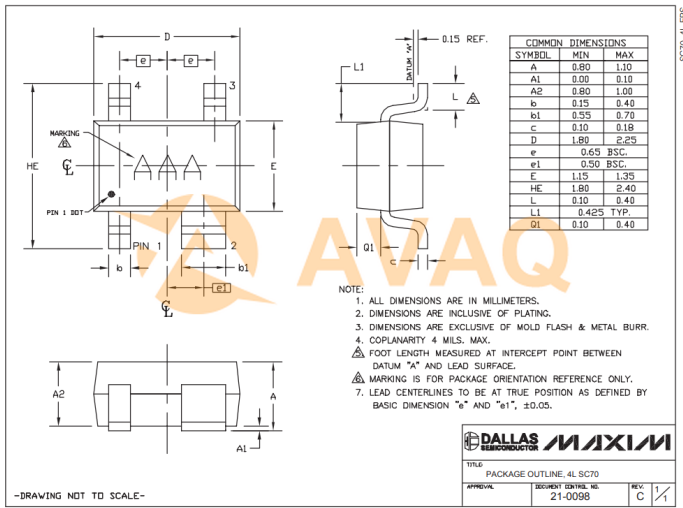
Images are for reference only

[Inquiry](#)

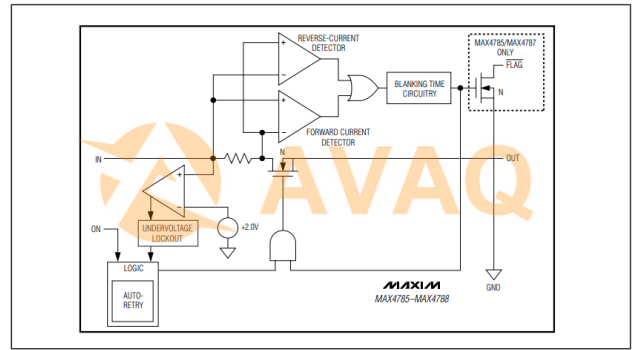
General Description

Key Features Application

Supply current is 65µA at VIN = 2.3V to 5V	When the switch is on and a load is connected to the port, a guaranteed blanking time of 14ms ensures that the transient voltages settle down. If after this blanking time the load current is greater than the current limit, the MAX4785 and MAX4787 enter a latch-off state where the switch is turned off and active-low FLAG is issued to the microprocessor. The switch can be turned on again by cycling the power or the ON pin.
Operating temperature range from -40°C to 85°C	The MAX4786 and MAX4788 have an autoretry feature where the switch turns off after the blanking time and then continuously checks to see if the overload condition is present. The switch remains on after the overload condition disappears.
Shutdown current is 0.01µA	The MAX4785 and MAX4787 are available in a tiny space-saving 4-pin or 5-pin SC70 package. The MAX4786 and MAX4788 are available only in the 4-pin SC70 package. For higher current current-limiting switches, refer to the MAX4789-MAX4794 and MAX1693 data sheets.
Undervoltage lockout	Applications
Fast current limit response time	Cell Phones
8µA latch-off current	Global Positioning Systems (GPS)
	Handheld Devices
Reverse current protection	PDAs and Palmtop Devices
Thermal shutdown protection	



MAX4785-MAX4788



Recommended For You

MAX1968EUI+

Analog Devices, Inc
TSSOP28

MAX1823BEUB+

Analog Devices, Inc
MSOP10

MAX662AESA+

Analog Devices, Inc
SOP8

MAX8911LEUA+

Analog Devices, Inc
MSOP8

MAX20049DATEB/VY+T

Analog Devices, Inc
TQFN-CU

MAX8501SA+

Analog Devices, Inc
SOIC(N)

MAX1636EAP+

Analog Devices, Inc
SSOP20

MAX77950EWW+

Analog Devices, Inc
54-WLP

MAX5943DEEE+

Analog Devices, Inc
BGA

MAX20754EITMA1+

Analog Devices, Inc
QFN36

MAX1044CSA+T

Analog Devices, Inc
SOP8

MAX1694EUB+T

Analog Devices, Inc
MSOP10

MAX4211EEUE+

Analog Devices, Inc
16-TSSOP

MAX5969EETE+

Analog Devices, Inc
TQFN-16

MAX5922CEUI-T

Analog Devices, Inc
BGA