
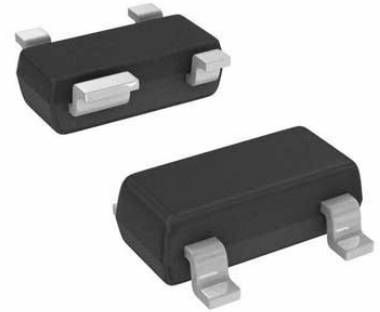


Switch Debouncer 4-Pin SOT-143 T/R

Manufacturer:	Maxim Integrated
Package/Case:	SOT143
Product Type:	Power Management ICs
RoHS:	RoHS Compliant/Lead free 
Lifecycle:	Active



Images are for reference only

[Inquiry](#)

General Description

The MAX6816/MAX6817/MAX6818 are single, dual, and octal switch debouncers that provide clean interfacing of mechanical switches to digital systems. They accept one or more bouncing inputs from a mechanical switch and produce a clean digital output after a short, preset qualification delay. Both the switch opening bounce and the switch closing bounce are removed. Robust switch inputs handle $\pm 25V$ levels and are $\pm 15kV$ ESD-protected for use in harsh industrial environments. They feature single-supply operation from +2.7V to +5.5V. Undervoltage lockout circuitry ensures the output is in the correct state upon power-up. The single MAX6816 and dual MAX6817 are offered in SOT packages and require no external components. Their low supply current makes them ideal for use in portable equipment. The MAX6818 octal switch debouncer is designed for data-bus interfacing. The MAX6818 monitors switches and provides a switch change-of-state output (active-low CH), simplifying microprocessor (μP) polling and interrupts. Additionally, the MAX6818 has three-state outputs controlled by an enable (active-low EN) pin, and is pin-compatible with the LS573 octal latch (except for the active-low CH pin), allowing easy interfacing to a digital data bus.

Key Features

- No external components required
- 6 μA Supply current
- Built-in protection circuitry improves system reliability

Application

- μP Switch Interfacing
- Industrial Instruments
- Membrane Keypads
- PC-Based Instruments
- Portable Instrumentation

Recommended For You

MAX1636EAP

Maxim Integrated
SSOP20

MAX1758EAI+

Maxim Integrated
SSOP28

MAX1673ESA+

Maxim Integrated
SOP8

MAX1682EUK+T

Maxim Integrated
SOT23-5

MAX1720EUT+T

Maxim Integrated
SOT23-6

MAX845ESA+T

Maxim Integrated
SOP-8

MAX1681ESA+

Maxim Integrated
SOP-8

MAX17113EIL+

Maxim Integrated
QFN

MAX690CPA+

Maxim Integrated
DIP8

MAX690MJA

Maxim Integrated
CDIP8

MAX6107EUR+T

Maxim Integrated
SOT23-3

MAX5920BESA+

Maxim Integrated
SOP-8

MAX5922AEUI+

Maxim Integrated
TSSOP28

MAX5900ABETT+T

Maxim Integrated
TDFN-6

MAX5903LBEUT

Maxim Integrated
SOT23-6