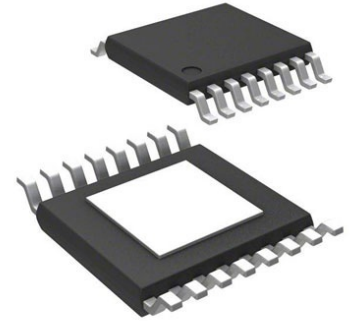


## LED Driver 4 Segment 19000uA Supply Current 16-Pin TSSOP T/R



Images are for reference only

**Manufacturer:** [STMicroelectronics, Inc](#)

**Package/Case:** HTSSOP16

**Product Type:** Optoelectronics

**RoHS:** RoHS Compliant/Lead free 

**Lifecycle:** NRND

[Inquiry](#)

### General Description

The STP04CM05 is a high-power LED driver and 4-bit shift register designed for Power-LED applications.

The STP04CM05 contains a 4-bit serial IN, parallel OUT shift register that feeds a 4-bit D-type storage register. In the output stage, four regulated current sources were designed to provide 80-400 mA constant current to drive high power LEDs. The STP04CM05 guarantees 20 V output driving capability, allowing users to connect more LEDs in series. The high clock frequency, 30 MHz, also satisfies the system requirements which include high volume data transmission. The STP04CM05 is well suited for very high brightness displays and special lighting applications. The STP04CM05 is offered in TSSOP16 exposed pad package.

### Key Features

4 constant current output channels

Adjustable output current through one external resistor

Can be driven by a 3.3 V microcontroller

Serial data IN / parallel data OUT

Output current: 80-400 mA

20 V output driving capability

### Recommended For You

#### STV7697A

STMicroelectronics, Inc

QFP

#### STLED316SMIR

STMicroelectronics, Inc

SOP24

#### STP4CMPQTR

STMicroelectronics, Inc

QFN20

**STM86312**

STMicroelectronics, Inc  
QFP

**STCS1PHR**

STMicroelectronics, Inc  
SOP8

**STLUX385**

STMicroelectronics, Inc  
TSSOP38

**STLD40DPUR**

STMicroelectronics, Inc  
QFN8

**STV7617**

STMicroelectronics, Inc  
QFP

**STLUX385A**

STMicroelectronics, Inc  
TSSOP38

**STV7610A/WAF**

STMicroelectronics, Inc  
BGA

**STLDC08PUR**

STMicroelectronics, Inc  
QFN10

**STLUX325ATR**

STMicroelectronics, Inc  
32-VQFN

**STV7697B**

STMicroelectronics, Inc  
QFP

**STLUX325A**

STMicroelectronics, Inc  
VFQFPN-32

**STLED325QTR**

STMicroelectronics, Inc  
N