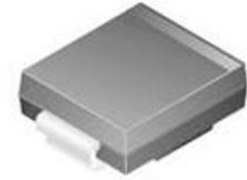


## TVS Diode Single Bi-Dir 5V 1.5KW 2-Pin SMC T/R



Images are for reference only

[Inquiry](#)

**Manufacturer:** [Diodes Inc](#)

**Package/Case:** SMC

**Product Type:** Thyristors

**Lifecycle:** Active

### General Description

VOLTAGE RANGE - 5.0 to 170 Volts PEAK PULSE POWER - 1500 Watts

### Recommended For You

#### **SMAJ48A-13-F**

Diodes Inc

SMA

#### **SMAJ16A-13-F**

Diodes Inc

SMA

#### **SMBJ10A-13-F**

Diodes Inc

DO-214AA

#### **SMBJ33CA-13-F**

Diodes Inc

SMB

#### **SMAJ13A-13-F**

Diodes Inc

SMA

#### **SMCJ33A-13-F**

Diodes Inc

SMC

#### **SMAJ33CA-13-F**

Diodes Inc

SMA

#### **SMBJ28A-13-F**

Diodes Inc

SMB

#### **SMCJ33CA-13-F**

Diodes Inc

DO-214AB

#### **SMAJ28A-13-F**

Diodes Inc

SMA

#### **SMAJ6.0A-13-F**

Diodes Inc

SMA

#### **SMAJ28CA-13-F**

Diodes Inc

SMA

**SMAJ58A-13-F**

Diodes Inc

SMA

**SMCJ24A-13-F**

Diodes Inc

SMC

**SMBJ17CA-13-F**

Diodes Inc

SMB