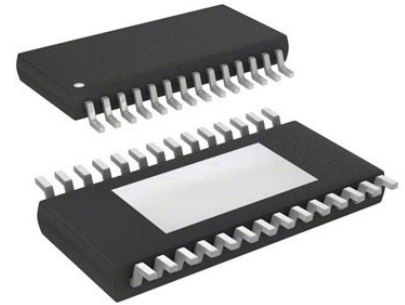


Monitor 3V to 5.5V 16-Pin TSSOP Tube**Manufacturer:** [Texas Instruments, Inc](#)**Package/Case:** TSSOP**Product Type:** Power Management ICs**RoHS:** RoHS Compliant/Lead free **Lifecycle:** Active

Images are for reference only

[Inquiry](#)**General Description**

The INA209 is a high-side current shunt and power monitor with an I²C interface. The INA209 monitors both shunt drop and shunt bus voltage. A programmable calibration value, combined with an internal multiplier, enables direct readouts in amperes. An additional multiplying register calculates power in watts. The INA209 features two separate, onboard watchdog capabilities: a warning comparator and an over-limit comparator. The warning comparator is useful for monitoring lower warning limits and incorporates a user-defined delay. The over-limit comparator assists with monitoring upper limits that could require immediate system shutdown.

The INA209 also includes an analog comparator and a programmable digital-to-analog converter (DAC) that combine to provide the fastest possible responses to current overload conditions.

The INA209 can be used together with hot swap controllers that already use a current sense resistor. The INA209 full-scale range can be selected to be either within the hot-swap controller sense limits, or wide enough to include them.

The INA209 senses across shunts on buses that can vary from 0V to 26V. The device uses a single +3V to +5.5V supply, drawing a maximum of 1.5mA of supply current. It is specified for operation from -25°C to +85°C.

Key Features

SENSES BUS VOLTAGES FROM 0V TO +26V

REPORTS CURRENT, VOLTAGE, AND POWER; STORES PEAKS

TRIPLE WATCHDOG LIMITS:

Lower Warning with Delay

Upper Over-limit, No Delay

Fast Analog Critical

HIGH ACCURACY: 1% MAX OVER TEMP

APPLICATIONS
SERVERS

TELECOM EQUIPMENT

AUTOMOTIVE

POWER MANAGEMENT

BATTERY CHARGERS

WELDING EQUIPMENT

POWER SUPPLIES

TEST EQUIPMENT

I2C is a trademark of NXP Semiconductors.

All other trademarks are the property of their respective owners.

Recommended For You

INA3221AIRGVR

Texas Instruments, Inc

VQFN16

INA200AQDGKRQ1

Texas Instruments, Inc

MSOP8

INA196AIDBVT

Texas Instruments, Inc

SOT23-5

INA220AIDCSR

Texas Instruments, Inc

MSOP10

INA198AQDBVRQ1

Texas Instruments, Inc

SOT23-5

INA228AQDGSRQ1

Texas Instruments, Inc

VSSOP-10

INA237AQDGSRQ1

Texas Instruments, Inc

VSSOP10

INA168QDBVRQ1

Texas Instruments, Inc

SOT23-5

INA226AQDGSRQ1

Texas Instruments, Inc

VSSOP10

INA3221AQRGVRQ1

Texas Instruments, Inc
QFN16

INA195AIDBVR

Texas Instruments, Inc
SOT23-5

INA197AIDBVT

Texas Instruments, Inc
SOT23-5

INA213AQDCKRQ1

Texas Instruments, Inc
SC70-6

INA300AQDGSRQ1

Texas Instruments, Inc
VSSOP-10

INA196AIDBVR

Texas Instruments, Inc
SOT23-5