
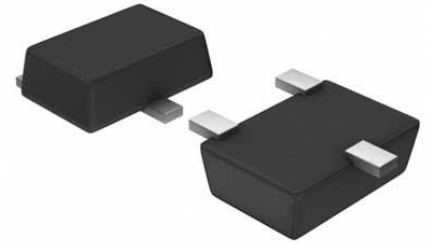


Comparator Single R-R O/P $\pm 22V/44V$ 5-Pin TSOT-23 T/R

| | |
|----------------------|--|
| Manufacturer: | Analog Devices, Inc |
| Package/Case: | SOT23-5 |
| Product Type: | Linear Displacement Sensors |
| RoHS: | RoHS Compliant/Lead free  |
| Lifecycle: | Active |



Images are for reference only

[Inquiry](#)**General Description**

The LT1716 comparator operates on any total power supply voltage between 2.7V and 44V drawing 35 μ A of quiescent current. The LT1716 has a unique input stage that can be taken 44V above V_- , independent of V_+ supply. (Built-in resistors protect the inputs for faults below the negative supply of up to 5V.) The inputs can withstand 44V both differential and common mode.

The output stage includes a class "B" pull-up current source, eliminating the need for an external resistive pull-up and saving power. Output voltage swings to within 35mV of the negative supply and 55mV of the positive supply, which makes the comparator a good choice for low voltage single supply operation. The output stage is also designed to drive loads connected to a higher supply than the LT1716 supply, the same as an open collector output stage.

The LT1716 is available in a SOT-23 5-lead package.

Key Features

Operates from 2.7V to 44V

Over-The-Top®: Input Common Mode Range Extends 44V Above V₋, Independent of V₊

Micropower: 35µA IQ

Offset Voltage: 1.5mV Max

Valid Output with Either Input 5V Below V₋

Rail-to-Rail Output Swing

Output Can Drive Loads Above V₊

Internal Pull-Up Current

Low Profile (1mm) SOT-23 (ThinSOT™) Package

AEC-Q100 Qualified for Automotive Applications

The LT1716 comparator operates on any total power supply voltage between 2.7V and 44V drawing 35µA of quiescent current. The LT1716 has a unique input stage that can be taken 44V above V₋, independent of V₊ supply. (Built-in resistors protect the inputs for faults below the negative supply of up to 5V.) The inputs can withstand 44V both differential and common mode.

The output stage includes a class “B” pull-up current source, eliminating the need for an external resistive pull-up and saving power. Output voltage swings to within 35mV of the negative supply and 55mV of the positive supply, which makes the comparator a good choice for low voltage single supply operation. The output stage is also designed to drive loads connected to a higher supply than the LT1716 supply, the same as an open collector output stage.

The LT1716 is available in a SOT-23 5-lead package.

Application

Power

Supply

Monitors

Relay/Lamp

Driver

Oscillators

Peak

Detector

Level

Shifting

Recommended For You

LT1920IS8

Analog Devices, Inc

SOP8

MLT04GS

Analog Devices, Inc

SOP

MLT04GP

Analog Devices, Inc

DIP18

LT6600IS8-20

Analog Devices, Inc

SOP8

LT6600IS8-5#PBF

Analog Devices, Inc

SOP-8

LTC2946IMS#PBF

Analog Devices, Inc

MSOP16

LTC1100CN8

Analog Devices, Inc

DIP8

LT1716CS5#TRMPBF

Analog Devices, Inc

SOT23-5

LT1716HS5#TRMPBF

Analog Devices, Inc

SOT-23

LT1716IS5#TRMPBF

Analog Devices, Inc

SOT23-5

LT1168ACN8#PBF

Analog Devices, Inc

PDIP

LT1252CS8#PBF

Analog Devices, Inc

SOP-8

MAX9502MELT+

Analog Devices, Inc

BGA

LTC2946MPMS-1#PBF

Analog Devices, Inc

MSOP-16

LT1018CS8#PBF

Analog Devices, Inc

SOP-8