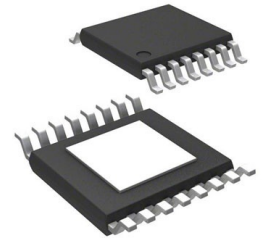


## Conv DC-DC 3.5V to 36V Synchronous Step Down Single-Out 1V to 20V 2.5A Automotive 16-Pin HTSSOP EP T/R



Images are for reference only

**Manufacturer:** [Texas Instruments, Inc](#)

**Package/Case:** HTSSOP16

**Product Type:** Power Management ICs

**RoHS:** RoHS Compliant/Lead free 

**Lifecycle:** Active

[Inquiry](#)

### General Description

The LM636x5-Q1 is an easy-to-use, synchronous, step-down DC/DC converter designed for rugged automotive applications. The LM636x5-Q1 can drive up to 1.5-A or 2.5-A of load current from an input of up to 36 V. The converter has high light load efficiency and output accuracy in a small solution size. Features such as a RESET flag and precision enable provide both flexible and easy-to-use solutions for a wide range of applications. Automatic frequency foldback at light load improves efficiency while maintaining tight load regulation. Integration eliminates many external components and provides a pinout designed for simple PCB layout. Protection features include thermal shutdown, input undervoltage lockout, cycle-by-cycle current limit, and hiccup short-circuit protection. The LM636x5-Q1 is available in the HTSSOP 16-pin power package, with PowerPAD , and the WSON 12-pin power package. space

## Key Features

AEC-Q100-qualified for automotive applications  
Device temperature grade 1: -40°C to +125°C ambient operating temperature

Functional Safety-Capable  
Documentation available to aid functional safety system design

Supports automotive system requirements  
Input voltage range: 3.5 V to 36 V

Short 50-ns minimum on time

Good EMI performance Pseudo-random spread spectrum Compatible with CISPR 25

23-μA low operating quiescent current

-40°C to +150°C junction temperature range

High design flexibility  
Pin selectable  $V_{OUT}$ : 3.3 V, 5 V, adjustable 1 V to 20 V

Pin compatible with the LM63610 and LM63635 (1 A, 3.25 A)

Pin selectable frequency: 400 kHz, 2.1 MHz, adjustable 250 kHz to 2200 kHz

Pin selectable FPWM, auto, sync modes

TSSOP: thermally enhanced package

WSON: for space-constrained applications

Small solution size  
As small as 10 mm × 10 mm for 2.5 A, 2.2 MHz with WSON package

Highly integrated solution

Low component count

## Recommended For You

---

### LM2637M

Texas Instruments, Inc  
SOP24

### LM5116MH

Texas Instruments, Inc  
TSSOP20

### LM234Z-3

Texas Instruments, Inc  
TO-92

### LM27761DSGR

Texas Instruments, Inc  
WSON8

### LM74700QDBVRQ1

Texas Instruments, Inc  
SOT23-6

### LM2991S

Texas Instruments, Inc  
TO-263

### LM74800QDRRRQ1

Texas Instruments, Inc  
WSON-12

### LMR14030SDDAR

Texas Instruments, Inc  
SOP8

### LM2940CT-12

Texas Instruments, Inc  
TO-220

**LM536035QPWPTQ1**

Texas Instruments, Inc

HTSSOP-16

**LM5575MH**

Texas Instruments, Inc

TSSOP16

**LM536013QDSXTQ1**

Texas Instruments, Inc

WSON-10

**LM5160QPWPRQ1**

Texas Instruments, Inc

HTSSOP14

**LM5576MH**

Texas Instruments, Inc

TSSOP20

**LMQ61460AFSQRJRRQ1**

Texas Instruments, Inc

VQFN-14