

Voltage Level Translator 2-CH Bidirectional 8-Pin VSSOP T/R

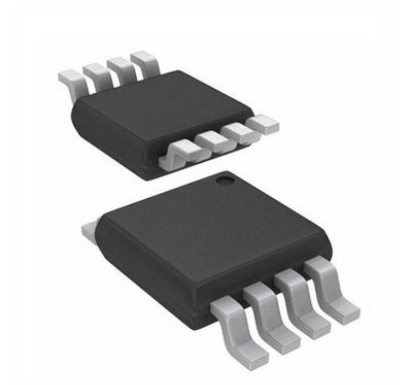
Manufacturer: [Texas Instruments, Inc](#)

Package/Case: VSSOP8

Product Type: Logic ICs

RoHS: RoHS Compliant/Lead free 

Lifecycle: Active



Images are for reference only

[Inquiry](#)

General Description

The LSF family of devices supports bidirectional voltage translation without the need for DIR pin which minimizes system effort (for PMBus, I2C, SMBus, etc.). The LSF family of devices supports up to 100-MHz up translation and greater than 100-MHz downtranslation at $\leq 30\text{pF}$ cap load and up to 40-MHz up/down translation at 50pF cap load which allowsthe LSF family to support more consumer or telecom interfaces (MDIO or SDIO).

LSF family supports 5-V tolerance on I/O port which makes it compatible with TTL levelsin industrial and telecom applications. The LSF family is able to set up different voltagetranslation levels on each channel which makes it very flexible.

Key Features

Provides bidirectional voltage translation with no direction pin

Supports up to 100-MHz up translation and greater than 100-MHz down translation at $\leq 30\text{pF}$ cap load and up to 40-MHz up/down translation at 50pF cap load

Allows bidirectional voltage-level translation between 0.95 V ? 1.8/2.5/3.3/5 V

1.2 V ? 1.8/2.5/3.3/5V

1.8 V ? 2.5/3.3/5 V

2.5 V ? 3.3/5 V

3.3 V ? 5 V

Low standby current

5-V tolerance I/O port to support TTL

Low RON provides less signal distortion

High-impedance I/O pins for EN = Low

Flow-through pinout for easy PCB trace routing

Latch-up performance >100 mA per JESD 17

-40°C to 125°C Operating temperature range

All trademarks are the property of their respective owners.

Description

The LSF family of devices supports bidirectional voltage translation without the need for DIR pin which minimizes system effort (for PMBus, I2C, SMBus, etc.). The LSF family of devices supports up to 100-MHz up translation and greater than 100-MHz down translation at $\leq 30\text{pF}$ cap load and up to 40-MHz up/down translation at 50pF cap load which allows the LSF family to support more consumer or telecom interfaces (MDIO or SDIO).

LSF family supports 5-V tolerance on I/O port which makes it compatible with TTL levels in industrial and telecom applications.

The LSF family is able to set up different voltage translation levels on each channel which makes it very flexible.

Application

Industrial, Automotive, Communications & Networking, Computers & Computer Peripherals

Recommended For You

SN74LS257BN

Texas Instruments, Inc

DIP16

SN74LS245DW

Texas Instruments, Inc

SOP20

SN74LS74AN

Texas Instruments, Inc

DIP

SN74LS14N

Texas Instruments, Inc

DIP

SN74LS244N

Texas Instruments, Inc

DIP

SN74LS32D

Texas Instruments, Inc

SOP14

SN74LS26N

Texas Instruments, Inc

DIP

SN74LS266N

Texas Instruments, Inc

DIP14

SN74LS157N

Texas Instruments, Inc

DIP16

SN74LS273N

Texas Instruments, Inc

DIP20

SN74LS145DR

Texas Instruments, Inc

SOP16

SN74LS38N

Texas Instruments, Inc

DIP14

SN74LS07N

Texas Instruments, Inc

DIP14

SN74LS75N

Texas Instruments, Inc

DIP

SN74LS378N

Texas Instruments, Inc

DIP