
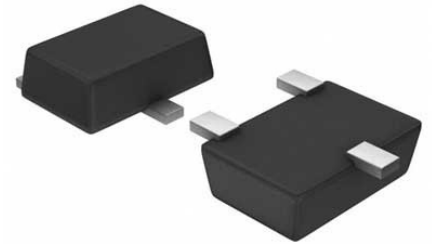


Comparator Single 5.5V Automotive 5-Pin SOT-23 T/R

Manufacturer:	Analog Devices, Inc
Package/Case:	SOT23-5
Product Type:	Linear Displacement Sensors
RoHS:	RoHS Compliant/Lead free 
Lifecycle:	Active



Images are for reference only

[Inquiry](#)

General Description

There are dual open-drain outputs to enable the comparator and reference circuit to be used in an inverting or noninverting configuration. The outputs can be pulled to any voltage up to a maximum of 5.5 V. The output stage is guaranteed to sink greater than 5 mA over temperature. The device is suitable for portable, commercial, industrial, and automotive applications.

Key Features

- 400 mV \pm 0.275% threshold
- Supply range: 1.7 V to 5.5 V
- Low quiescent current: 6.5 μ A typical
- Input range includes ground
- Internal hysteresis: 9.3 mV typical
- Low input bias current: \pm 5 nA maximum
- Dual open-drain outputs
- Small SOT-23 package

Application

- Li-Ion monitoring
- Threshold detectors
- Relay driving
- Optoisolator driving
- Industrial control systems
- Handheld instruments

Recommended For You

AD8309ARUZ

Analog Devices, Inc

TSSOP-16

AD524BDZ

Analog Devices, Inc

CDIP-16

AD8221BR

Analog Devices, Inc

SOP-8

AD8221ARZ

Analog Devices, Inc
SOP8

AD627BRZ

Analog Devices, Inc
SOP8

AD622ANZ

Analog Devices, Inc
DIP8

ADA4930-2YCPZ-R7

Analog Devices, Inc
LFCSP24

AD8034ARZ

Analog Devices, Inc
SOP8

AD8561ARZ

Analog Devices, Inc
SOP8

AD633JRZ

Analog Devices, Inc
SOP8

AD632AH

Analog Devices, Inc
CAN10

AD8422BRZ

Analog Devices, Inc
SOP8

ADCMP600BKSZ-R2

Analog Devices, Inc
SC70-5

AD620BN

Analog Devices, Inc
DIP8

AD620BR

Analog Devices, Inc
SOP