
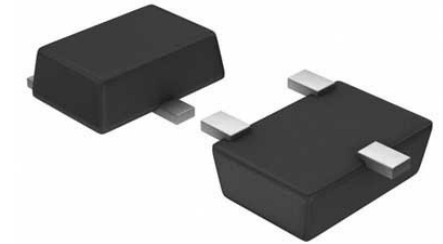


## Temp Sensor Digital Automotive 5-Pin SOT-23 T/R

<b>Manufacturer:</b>	<a href="#">Texas Instruments, Inc</a>
<b>Package/Case:</b>	SOT23-5
<b>Product Type:</b>	Sensors, Transducers
<b>RoHS:</b>	RoHS Compliant/Lead free 
<b>Lifecycle:</b>	Active



Images are for reference only

[Inquiry](#)

### General Description

The TMP709 is a fully-integrated, resistor- programmable temperature switch with a temperature threshold that is set by just one external resistor within the entire operating range. The TMP709 provides an open-drain, active-low output and has a 2.7-V to 5.5-V supply-voltage range.

The temperature threshold accuracy is typically  $\pm 0.5^{\circ}\text{C}$ , with a maximum of  $\pm 3^{\circ}\text{C}$  ( $60^{\circ}\text{C}$  to  $100^{\circ}\text{C}$ ). The quiescent current consumption is typically  $40\ \mu\text{A}$ . Hysteresis is pin-selectable to  $2^{\circ}\text{C}$  or  $10^{\circ}\text{C}$ .

The TMP709 is available in a 5-pin, SOT-23 package.

### Key Features

Threshold Accuracy:  
 $\pm 0.5^{\circ}\text{C}$  Typical

$\pm 3^{\circ}\text{C}$  Maximum ( $60^{\circ}\text{C}$  to  $100^{\circ}\text{C}$ )

Temperature Threshold Set By 1% External Resistor

Low Quiescent Current:  $40\ \mu\text{A}$  Typical

Open-Drain, Active-Low Output Stage

Pin-Selectable  $2^{\circ}\text{C}$  or  $10^{\circ}\text{C}$  Hysteresis

Reset Operation Specified at  $V_{CC} = 0.8\ \text{V}$

Supply Range: 2.7 V to 5.5 V

Package: 5-Pin SOT-23

#### Description

The TMP709 is a fully-integrated, resistor- programmable temperature switch with a temperature threshold that is set by just one external resistor within the entire operating range. The TMP709 provides an open-drain, active-low output and has a 2.7-V to 5.5-V supply-voltage range.

The temperature threshold accuracy is typically  $\pm 0.5^{\circ}\text{C}$ , with a maximum of  $\pm 3^{\circ}\text{C}$  ( $60^{\circ}\text{C}$  to  $100^{\circ}\text{C}$ ). The quiescent current consumption is typically  $40\ \mu\text{A}$ . Hysteresis is pin-selectable to  $2^{\circ}\text{C}$  or  $10^{\circ}\text{C}$ .

The TMP709 is available in a 5-pin, SOT-23 package.

## Recommended For You

---

### **TMP451AIDQFR**

Texas Instruments, Inc  
WS0N8

### **TMP411AQDGKRQ1**

Texas Instruments, Inc  
MSOP8

### **TMP100AQDBVRQ1**

Texas Instruments, Inc  
SOT-23-6

### **TMP75AQDGKRQ1**

Texas Instruments, Inc  
VSSOP8

### **TMP112AQDRLRQ1**

Texas Instruments, Inc  
SOT-563

### **TMP101NAQDBVRQ1**

Texas Instruments, Inc  
SOT23-6

### **TMP102AQDRLRQ1**

Texas Instruments, Inc  
SOT-563

### **TMP422AQDCNRQ1**

Texas Instruments, Inc  
SOT23-8

### **TMP421AQDCNRQ1**

Texas Instruments, Inc  
SOT23-8

### **TMP451AQDQWRQ1**

Texas Instruments, Inc  
WS0N8

### **TMP451HQDQFRQ1**

Texas Instruments, Inc  
WS0N8

### **TMP411DQDGKRQ1**

Texas Instruments, Inc  
MSOP8

### **TMP451AQDQFRQ1**

Texas Instruments, Inc  
WS0N8

### **TMP75BQDGKRQ1**

Texas Instruments, Inc  
MSOP8

### **TMP126EDBVRQ1**

Texas Instruments, Inc  
SOT23-6