
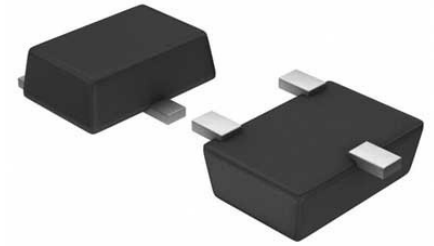


## V-Ref Adjustable 1.24V to 6V 15mA 3-Pin SOT-23 T/R

<b>Manufacturer:</b>	<a href="#">Texas Instruments, Inc</a>
<b>Package/Case:</b>	SOT23-3
<b>Product Type:</b>	Power Management ICs
<b>RoHS:</b>	RoHS Compliant/Lead free 
<b>Lifecycle:</b>	Active



Images are for reference only

[Inquiry](#)

### General Description

The TPS7A16 family of ultralow power, low-dropout (LDO) voltage regulators offers the benefits of ultra-low quiescent current, high input voltage and miniaturized, high thermal-performance packaging.

The TPS7A16 family is designed for continuous or sporadic (power backup) battery-powered applications where ultralow quiescent current is critical to extending system battery life.

The TPS7A16 family offers an enable pin (EN) compatible with standard CMOS logic and an integrated open drain active-high power good output (PG) with a user-programmable delay. These pins are intended for use in microcontroller-based, battery-powered applications where power-rail sequencing is required. In addition, the TPS7A16 is ideal for generating a low-voltage supply from multicell solutions ranging from high cell-count power-tool packs to automotive applications; not only can this device supply a well-regulated voltage rail, but it can also withstand and maintain regulation during voltage transients. These features translate to simpler and more cost-effective, electrical surge-protection circuitry.

## Key Features

Wide Input Voltage Range: 3 V to 60 V

Ultralow Quiescent Current: 5  $\mu$ A

Quiescent Current at Shutdown: 1  $\mu$ A

Output Current: 100 mA

Low Dropout Voltage: 60 mV at 20 mA

Accuracy: 2%

Available in:

Fixed Output Voltage: 3.3 V, 5 V

Adjustable Version from 1.2 V to 18.5 V

Power-Good With Programmable Delay

Current Limit and Thermal Shutdown Protections

Stable with Ceramic Output Capacitors:

Packages: High Thermal Performance MSOP-8

and SON-8 PowerPAD

Operating Temperature Range:

## Recommended For You

---

### TL2843P

Texas Instruments, Inc

DIP8

### TL431CP

Texas Instruments, Inc

DIP8

### TL7705ACDR

Texas Instruments, Inc

SOP8

### TL3843P

Texas Instruments, Inc

DIP8

### TL497ACN

Texas Instruments, Inc

DIP14

### TL3845P

Texas Instruments, Inc

DIP8

### TL494CD

Texas Instruments, Inc

SOP-16

### TL431IDBVR

Texas Instruments, Inc

SOT23-5

### TL494CN

Texas Instruments, Inc

DIP

### TL431CDBVR

Texas Instruments, Inc

SOT23-5

### TL7705ACP

Texas Instruments, Inc

DIP8

### TL3842P

Texas Instruments, Inc

DIP8

**TLV73325PDBVT**

Texas Instruments, Inc

SOT23-5

**TLV73333PDBVR**

Texas Instruments, Inc

SOT23-5

**TL431BIDBZT**

Texas Instruments, Inc

SOT23-3