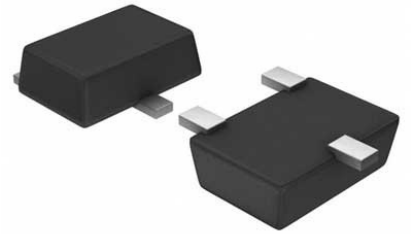



Comparator Single R-R I/P 5.5V Automotive 5-Pin SOT-23 T/R



Images are for reference only

[Inquiry](#)

Manufacturer:	Texas Instruments, Inc
Package/Case:	SOT23-5
Product Type:	Linear Displacement Sensors
RoHS:	RoHS Compliant/Lead free 
Lifecycle:	Active

General Description

The LMV7239-Q1 is a ultra low power, low voltage, 75-ns comparator. It is ensured to operate over the full supply voltage range of 2.7 V to 5.5 V. This device achieves a 75-ns propagation delay while consuming only 65 μ A of supply current at 5 V.

The LMV7239-Q1 has a greater than rail-to-rail common-mode voltage range. The input common mode voltage range extends 200 mV below ground and 200 mV above supply, allowing both ground and supply sensing.

The LMV7239-Q1 features a push-pull output stage. This feature allows operation without the need of an external pullup resistor.

The LMV7239-Q1 is available in the 5-pin SC70 and 5-pin SOT-23 packages, which are ideal for systems where small size and low power is critical.

Key Features

Qualified for Automotive Applications

AEC-Q100 Qualified With the Following Results:

Device Temperature Grade 1: -40°C to 125°C Ambient Operating Temperature Range

Device HBM ESD Classification Level 1C

Device CDM ESD Classification Level C5 for the DBV Package

VS = 5 V, TA = 25°C (Typical Values Unless Otherwise Specified)

Propagation Delay: 75 ns

Low supply Current: 65 µA

Rail-to-Rail Input

Open Drain and Push-Pull Output

Ideal for 2.7-V and 5-V, Single-Supply Applications

Available in Space-Saving Packages:

5-Pin SOT-23

5-Pin SC70

All trademarks are the property of their respective owners.

Recommended For You

LMB11MX

Texas Instruments, Inc

SOP8

LMV7219M5

Texas Instruments, Inc

SOT23-5

LMB48D

Texas Instruments, Inc

SOP-14

LM224N

Texas Instruments, Inc

DIP14

LM239J

Texas Instruments, Inc

CDIP14

LMV331M5

Texas Instruments, Inc

SOT23-5

LMB93ADR

Texas Instruments, Inc

SOP8

LM293DR

Texas Instruments, Inc

SOP8

LM293D

Texas Instruments, Inc

SOP8

LMV824MX

Texas Instruments, Inc

TSSOP

LMV358M

Texas Instruments, Inc

SOP8

LMV321M5

Texas Instruments, Inc

SOT23-5

LM741H

Texas Instruments, Inc

CAN8

LMI93AH

Texas Instruments, Inc

CAN8

LMI11H/NOPB

Texas Instruments, Inc

CAN8