
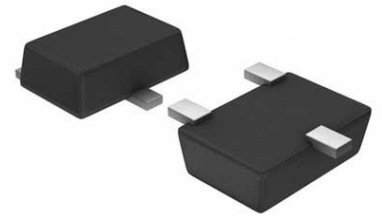


Comparator Single R-R O/P $\pm 22V/44V$ Automotive 5-Pin TSOT-23 T/R

Manufacturer:	Analog Devices, Inc
Package/Case:	SOT23-5
Product Type:	Linear Displacement Sensors
RoHS:	RoHS Compliant/Lead free 
Lifecycle:	Active



Images are for reference only

[Inquiry](#)

General Description

The LT1716 comparator operates on any total power supply voltage between 2.7V and 44V drawing 35 μ A of quiescent current. The LT1716 has a unique input stage that can be taken 44V above V₋, independent of V₊ supply. (Built-in resistors protect the inputs for faults below the negative supply of up to 5V.) The inputs can withstand 44V both differential and common mode.

The output stage includes a class “B” pull-up current source, eliminating the need for an external resistive pull-up and saving power. Output voltage swings to within 35mV of the negative supply and 55mV of the positive supply, which makes the comparator a good choice for low voltage single supply operation. The output stage is also designed to drive loads connected to a higher supply than the LT1716 supply, the same as an open collector output stage.

The LT1716 is available in a SOT-23 5-lead package.

Key Features

35 μ A IQ Micropower

Valid output with either input 5V below V₋

Rail-to-rail output swing

Output can drive loads above V₊

Internal pull-up current

LTYYD Part marking

Application

Automation & Process Control, Sensing & Instrumentation, Industrial

Recommended For You

LT1920IS8

Analog Devices, Inc

SOP8

MLT04GS

Analog Devices, Inc

SOP

MLT04GP

Analog Devices, Inc

DIP18

LT6600IS8-20

Analog Devices, Inc
SOP8

LT6600IS8-5#PBF

Analog Devices, Inc
SOP-8

LTC2946IMS#PBF

Analog Devices, Inc
MSOP16

LTC1100CN8

Analog Devices, Inc
DIP8

LT1716CS5#TRMPBF

Analog Devices, Inc
SOT23-5

LT1716HS5#TRMPBF

Analog Devices, Inc
SOT-23

LT1716IS5#TRPBF

Analog Devices, Inc
SOT23-5

LT1168ACN8#PBF

Analog Devices, Inc
PDIP

LT1252CS8#PBF

Analog Devices, Inc
SOP-8

MAX9502MELT+

Analog Devices, Inc
BGA

LTC2946MPMS-1#PBF

Analog Devices, Inc
MSOP-16

LT1018CS8#PBF

Analog Devices, Inc
SOP-8