
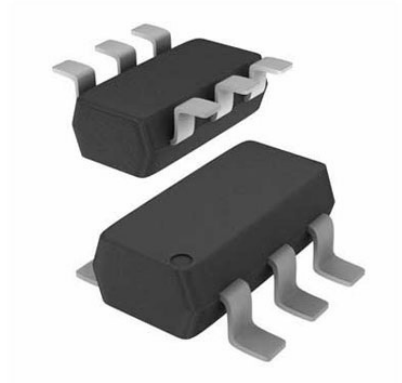


Comparator Single 5.5V 4-Pin SC-70 T/R

Manufacturer:	Analog Devices, Inc
Package/Case:	SC70-4
Product Type:	Linear Displacement Sensors
RoHS:	RoHS Compliant/Lead free 
Lifecycle:	Active



Images are for reference only

[Inquiry](#)

General Description

The ADCMP350/ADCMP354/ADCMP356 parts are comparator and reference circuits suitable for use in general-purpose applications. The high voltage input and output structures will allow voltages of up to 22 V on the input of all devices and the output of the open-drain devices. High performance over the -40°C to $+125^{\circ}\text{C}$ temperature range makes them suitable for use in automotive and other thermally harsh applications, while low power consumption and space-efficient SC70 packaging make them ideal for battery-powered portable equipment.

Applications

- Voltage detectors
- Microprocessor systems
- Computers
- Battery monitors
- Intelligent instruments
- Portable equipment

Key Features

Comparators with 0.6 V on-chip references

Output stages:

Open-drain active-low (ADCMP350)

Open-drain active-high (ADCMP354)

Push-pull active-high (ADCMP356)

High voltage (up to 22 V) tolerance on VIN and open-drain output pins

Low power consumption (10 μ A)

10 nA input bias current

15 mV hysteresis

5 μ s propagation delay

Specified over -40°C to $+125^{\circ}\text{C}$ temperature range

4-lead SC70 package

Application

Voltage detectors

Microprocessor systems

Computers

Battery monitors

Intelligent instruments

Portable equipment

Recommended For You

AD8309ARUZ

Analog Devices, Inc

TSSOP16

AD524BDZ

Analog Devices, Inc

CDIP-16

AD8221BR

Analog Devices, Inc

SOP-8

AD8221ARZ

Analog Devices, Inc

SOP8

AD627BRZ

Analog Devices, Inc

SOP8

AD622ANZ

Analog Devices, Inc

DIP8

ADA4930-2YCPZ-R7

Analog Devices, Inc

LFCSP24

AD8034ARZ

Analog Devices, Inc

SOP8

AD8561ARZ

Analog Devices, Inc

SOP8

AD633JRZ

Analog Devices, Inc

SOP8

AD632AH

Analog Devices, Inc

CAN10

AD8422BRZ

Analog Devices, Inc

SOP8

ADCMP600BKSZ-R2

Analog Devices, Inc

SC70-5

AD620BN

Analog Devices, Inc

DIP8

AD620BR

Analog Devices, Inc

SOP