
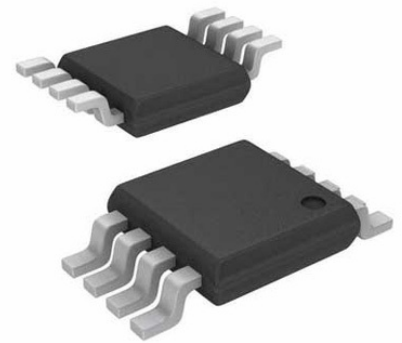


Pwr Mux Autoswitch 1.5V to 5.5V 1.25A 8-Pin TSSOP T/R

Manufacturer:	Texas Instruments, Inc
Package/Case:	TSSOP8
Product Type:	Switches
RoHS:	RoHS Compliant/Lead free 
Lifecycle:	Active



Images are for reference only

[Inquiry](#)

General Description

Key Features

- Reverse and cross-conduction blocking
- 0.5 μ A Typical low standby current
- 55 μ A Typical low operating current
- Adjustable current limit
- CMOS- and TTL-compatible control inputs
- Manual and auto-switching operating modes
- Thermal shutdown

Recommended For You

TPD3S014DBVR

Texas Instruments, Inc
SOT23-6

TPS2065CDBVR

Texas Instruments, Inc
SOT23-5

TPS2557DRBT

Texas Instruments, Inc
SON8

TPS2042BDR

Texas Instruments, Inc
SOP8

TPS2051BDR

Texas Instruments, Inc
SOP8

TPL7407LPWR

Texas Instruments, Inc
TSSOP16

TPS23753APWR

Texas Instruments, Inc
TSSOP14

TPS2116DRLR

Texas Instruments, Inc
SOT5X3-8

TPS259460ARPWR

Texas Instruments, Inc
VQFN-10

TPS23751PWPR

Texas Instruments, Inc
HTSSOP16

TPS65150QPWRQ1

Texas Instruments, Inc
HTSSOP-24

TPS2410PWR

Texas Instruments, Inc
TSSOP-14

TPS22914BYFPR

Texas Instruments, Inc
DSBGA4

TPS2115ADRBR

Texas Instruments, Inc
VSON8

TPS2113ADRBR

Texas Instruments, Inc
SON8