
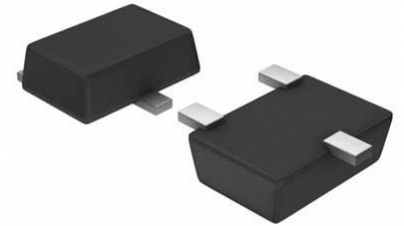


Driver 2-OUT Low Side Half Brdg Inv/Non-Inv 5-Pin SOT-23
T/R

Manufacturer:	Infineon Technologies Corporation
Package/Case:	SOT23-5
Product Type:	Drivers
RoHS:	RoHS Compliant/Lead free 
Lifecycle:	Active



Images are for reference only

[Inquiry](#)

General Description

1-channel MOSFET gate driver ICs are the crucial link between control ICs and powerful MOSFET and GaN switching devices. Gate driver ICs enable high system level efficiencies, excellent power density and consistent system robustness. 1EDN family: Fast, precise, strong and compatible Highly efficient SMPS enabled by 5 ns short slew rates and ± 5 ns propagation delay precision for fast MOSFET and GaN switching Separate source and sink outputs simplify the application design Industry standard packages and pinout ease system design upgrades

Key Features

- 5A reverse output current robustness eliminates the need for Schottky switching diodes when driving MOSFETs in TO-220 and TO-247 packages
- Cool driver ICs thanks to true rail-to-rail low impedance output stages
- 4V and 8V UVLO (Under Voltage Lock Out) options for instant MOSFET protection during start-up and under abnormal conditions

Application

- PFC
- Synchronous rectification
- DC-DC converters
- Industrial SMPS
- Wireless charging

Recommended For You

1ED020112-F2

Infineon Technologies Corporation
SOP16

1EDN7550UXTSA1

Infineon Technologies Corporation
TSNP6

BTS70021EPPXUMA1

Infineon Technologies Corporation
TSDSO-14

TLF50211ELXUMA2

Infineon Technologies Corporation
SSOP-14

1ED3123MC12HXUMA1

Infineon Technologies Corporation
PG-DSO-8

1EDN7511BXUSA1

Infineon Technologies Corporation
SOT23-6

1EDC40112AHXUMA1

Infineon Technologies Corporation
PG-DSO-8-59

BTS70041EPPXUMA1

Infineon Technologies Corporation
TSSOP14

1ED020112FA2XUMA2

Infineon Technologies Corporation
PG-DSO-20

BTT60101ERAXUMA1

Infineon Technologies Corporation
PG-TDSO-14

BTS70101EPAXUMA1

Infineon Technologies Corporation
TSSOP14

BTS70081EPPXUMA1

Infineon Technologies Corporation
PG-TSDSO-14

BTS50901EJAXUMA1

Infineon Technologies Corporation
SOP8

TLS810B1EJV50XUMA1

Infineon Technologies Corporation
SOP8

BTS409L1E3062ABUMA1

Infineon Technologies Corporation
TO263-5