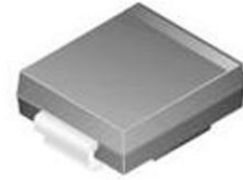


**Diode TVS Single Bi-Dir 78V 1.5KW 2-Pin SMC**

Images are for reference only

[Inquiry](#)

**Manufacturer:** [Taiwan Semiconductor](#)

**Package/Case:** SMC

**Product Type:** Thyristors

**Lifecycle:** Active

**General Description**

1500 Watt Peak Pulse Power VOLTAGE-5.0 TO 440 Volts

**Key Features**

Halogen-Free and RoHS compliant

For surface mount applications in order to optimize board space

Low profile package

Built-in strain relief

Glass passivated junction

Low inductance

Excellent clamping capability

Repetition Rate (duty cycle): 0.05%

Fast response time: typically less than 1.0ps from 0 Volts to V(BR) min.

Typical IR less than 1mA above 10V

High temperature soldering: 250 degrees C/10 seconds at terminals

Plastic package has Underwriters Laboratory Flammability 94V-O

**Recommended For You**

**SMBJ12CA**

Taiwan Semiconductor

SMB

**SMCJ33CA**

Taiwan Semiconductor

SMC

**SMCJ15A**

Taiwan Semiconductor

SMC

**P6SMB36A**

Taiwan Semiconductor

SMB

**SMCJ12A**

Taiwan Semiconductor

SMC

**SMBJ14A**

Taiwan Semiconductor

SMB

**P6SMB62CA**

Taiwan Semiconductor

DO-214AA

**SMCJ18A**

Taiwan Semiconductor

SMC(DO-214AB)

**SMCJ15CA**

Taiwan Semiconductor

SMC

**SMCJ150A**

Taiwan Semiconductor

SMC(DO-214AB)

**P6KE200CA**

Taiwan Semiconductor

DO-15

**P6KE51A**

Taiwan Semiconductor

DO-15

**P6KE36A**

Taiwan Semiconductor

DO-15

**P6KE100A**

Taiwan Semiconductor

DO-15

**P6KE220A**

Taiwan Semiconductor

DO-15