
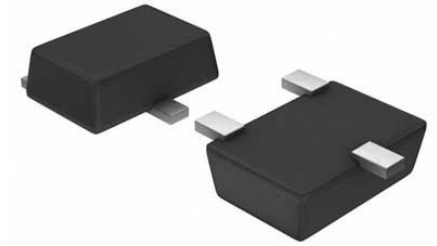


## Comparator Single 8V 5-Pin SOT-23 T/R

<b>Manufacturer:</b>	<a href="#">Texas Instruments, Inc</a>
<b>Package/Case:</b>	SOT23-5
<b>Product Type:</b>	Linear Displacement Sensors
<b>RoHS:</b>	RoHS Compliant/Lead free 
<b>Lifecycle:</b>	Active



Images are for reference only

[Inquiry](#)

## General Description

The LMC7215/LMC7215-Q1/LMC7225 are ultra low power comparators with a maximum of 1  $\mu$ A power supply current. They are designed to operate over a wide range of supply voltages, from 2V to 8V.

The LMC7215/LMC7215-Q1/LMC7225 have a greater than rail-to-rail common mode voltage range. This is a real advantage in single supply applications.

The LMC7215 features a push-pull output stage. This feature allows operation with absolute minimum amount of power consumption when driving any load.

The LMC7225 features an open drain output. By connecting an external resistor, the output of the comparator can be used as a level shifter to any desired voltage to as high as 15V.

The LMC7215/LMC7215-Q1/LMC7225 are designed for systems where low power consumption is the critical parameter.

Ensured operation over the full supply voltage range of 2.7V to 5V and rail-to-rail performance makes this comparator ideal for battery-powered applications.

## Key Features

(Typical Unless Otherwise Noted)

Ultra Low Power Consumption 0.7  $\mu$ A

Wide Range of Supply Voltages 2V to 8V

Input Common-Mode Range Beyond  $V^+$  and V

Open Collector and Push-Pull Output

High Output Current Drive: (@  $V_S = 5V$ ) 45 mA

Propagation Delay (@  $V_S = 5V$ , 10 mV Overdrive) 25  $\mu$ s

Tiny 5-Pin SOT-23 Package

Latch-up Resistance >300 mA

LMC7215-Q1 is an Automotive Grade Product that is AEC-Q100 Grade 3 Qualified.

All trademarks are the property of their respective owners.

## Recommended For You

---

### **LM311MX**

Texas Instruments, Inc  
SOP8

### **LMV7219M5**

Texas Instruments, Inc  
SOT23-5

### **LM348D**

Texas Instruments, Inc  
SOP-14

### **LM224N**

Texas Instruments, Inc  
DIP14

### **LM239J**

Texas Instruments, Inc  
CDIP14

### **LMV331M5**

Texas Instruments, Inc  
SOT23-5

### **LM393ADR**

Texas Instruments, Inc  
SOP8

### **LM293DR**

Texas Instruments, Inc  
SOP8

### **LM293D**

Texas Instruments, Inc  
SOP8

### **LMV824MEX**

Texas Instruments, Inc  
TSSOP

### **LMV358M**

Texas Instruments, Inc  
SOP8

### **LMV321M5**

Texas Instruments, Inc  
SOT23-5

### **LM741H**

Texas Instruments, Inc  
CAN8

### **LM193AH**

Texas Instruments, Inc  
CAN8

### **LM111H/NOPB**

Texas Instruments, Inc  
CAN8