
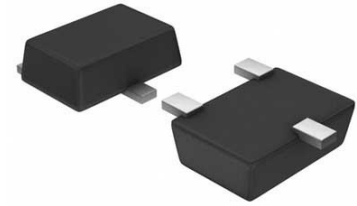


## DIST Single 5.5V 2.7A 5-Pin SOT-25 T/R

|                      |  |
|----------------------|--|
| <b>Manufacturer:</b> | <a href="#">Diodes Inc</a>   |
| <b>Package/Case:</b> | SOT23-5  |
| <b>Product Type:</b> | Switches   |
| <b>RoHS:</b>         | RoHS Compliant/Lead free  |
| <b>Lifecycle:</b>    | NRND   |



Images are for reference only

[Inquiry](#)

### General Description

Avaq Semiconductor offers the highly versatile and reliable AP22802AW5-7 driver, produced by Diodes Inc. With its multifunctional and high-performance capabilities, this component is an excellent choice for a wide range of electronic projects.

To ensure that you have all the necessary information to make the most of this component, Avaq provides a free datasheet PDF, as well as circuit diagrams, pin layouts, pin details, pin voltage ratings, and equivalent components for the AP22802AW5-7.

Avaq also offers free samples. Simply fill out and submit the sample request form to receive your free samples for testing. If you have any questions, please feel free to contact us at ar

### Recommended For You

|                     |                      |                          |
|---------------------|----------------------|--------------------------|
| <b>AP3012KTR-G1</b> | <b>AP2171WG-7</b>    | <b>AP2411MP-13</b>       |
| Diodes Inc          | Diodes Inc           | Diodes Inc               |
| SOT23-5             | SOT23-5              | MSOP8                    |
| <b>AP22966DC8-7</b> | <b>APX811-29UG-7</b> | <b>AP9101CAK6-ABTRGI</b> |
| Diodes Inc          | Diodes Inc           | Diodes Inc               |
| DFN-14              | SOT143               | SOT-26                   |
| <b>AP2511M8-13</b>  | <b>AP2181DMPG-13</b> | <b>AP2161DSG-13</b>      |
| Diodes Inc          | Diodes Inc           | Diodes Inc               |
| MSOP8               | MSOP8                | SOP-8                    |
| <b>AP2181MPG-13</b> | <b>AP2337SA-7</b>    | <b>AP2151AW-7</b>        |
| Diodes Inc          | Diodes Inc           | Diodes Inc               |
| MSOP8               | SOT23                | SOT25                    |
| <b>AP2411S-13</b>   | <b>AP2161WG-7</b>    | <b>AP2821KIR-G1</b>      |
| Diodes Inc          | Diodes Inc           | Diodes Inc               |
| SOP8                | SOT23-5              | SOT23-5                  |