
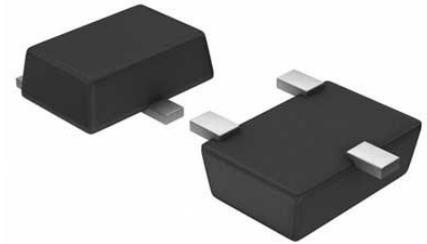


Comparator Single R-R I/P $\pm 8V/16V$ 5-Pin SOT-23 T/R

Manufacturer:	Texas Instruments, Inc
Package/Case:	SOT23-5
Product Type:	Linear Displacement Sensors
RoHS:	RoHS Compliant/Lead free 
Lifecycle:	Active



Images are for reference only

[Inquiry](#)

General Description

The TLV370x is Texas Instruments' first family of nanopower comparators with only 560 nA per channel supply current, which make this device ideal for battery power and wireless handset applications.

The TLV370x has a minimum operating supply voltage of 2.7 V over the extended industrial temperature range ($T_A = -40^\circ\text{C}$ to 125°C), while having an input common-mode range of -0.1 to $V_{CC} + 5$ V. The low supply current makes it an ideal choice for battery-powered portable applications where quiescent current is the primary concern. Reverse battery protection guards the amplifier from an overcurrent condition due to improper battery installation. For harsh environments, the inputs can be taken 5 V above the positive supply rail without damage to the device.

All members are available in PDIP and SOIC with the singles in the small SOT-23 package, duals in the MSOP, and quads in the TSSOP package.

Key Features

Low Supply Current ... 560 nA/Per Channel

Input Common-Mode Range Exceeds the Rails ... -0.1 V to $V_{CC} + 5$ V

Supply Voltage Range ... 2.5 V to 16 V

Reverse Battery Protection Up to 18 V

Push-Pull CMOS Output Stage

Specified Temperature Range
 0°C to 70°C – Commercial Grade

-40°C to 125°C – Industrial Grade

Ultra-Small Packaging
 5-Pin SOT-23 (TLV3701)

8-Pin MSOP (TLV3702)

Universal Op-Amp EVM (Reference SLOU060 for More Information)

All trademarks are the property of their respective owners.

Recommended For You

TLC27M2CP

Texas Instruments, Inc
DIP8

TLV3501AIDR

Texas Instruments, Inc
SOP8

TL071ACP

Texas Instruments, Inc
DIP-8

TL062CDR

Texas Instruments, Inc
SOP8

TLE2142IP

Texas Instruments, Inc
DIP8

TLC272AID

Texas Instruments, Inc
SOP-8

TLV3502AQDCNRQ1

Texas Instruments, Inc
SOT23-8

TL084CD

Texas Instruments, Inc
SOP14

TLV2711IDBVR

Texas Instruments, Inc
SOT23-5

TLC074CD

Texas Instruments, Inc
SOP14

TLC2272ACD

Texas Instruments, Inc
SOP-8

TLC2272AIDR

Texas Instruments, Inc
SOP8

TLV2462ID

Texas Instruments, Inc
SOP-8

TLV2471QDBVRQ1

Texas Instruments, Inc
SOT23-5

TLV2381IDBVR

Texas Instruments, Inc
SOT23-5