
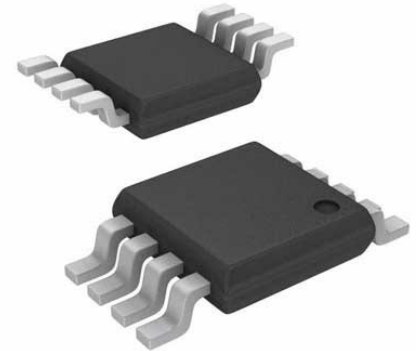


Comparator Single 18V Automotive 8-Pin VSSOP T/R

Manufacturer:	Texas Instruments, Inc
Package/Case:	MSOP8
Product Type:	Linear Displacement Sensors
RoHS:	RoHS Compliant/Lead free 
Lifecycle:	Active



Images are for reference only

[Inquiry](#)

General Description

The INA200-Q1, INA201-Q1, and INA202-Q1 (INA20x-Q1) are low- or high-side current-shunt monitors with voltage output. The INA20x-Q1 devices can sense drops across shunts at common-mode voltages from -16 V to $+80\text{ V}$. The INA20x-Q1 are available with three output voltage scales: 20 V/V, 50 V/V, and 100 V/V, with up to a 500-kHz bandwidth.

The INA20x-Q1 also incorporate an open-drain comparator and internal reference that provides a 0.6-V threshold. External dividers set the current trip point. The comparator includes a latching capability, and can be made transparent by grounding (or leaving open) the $\overline{\text{RESET}}$ pin.

The INA20x-Q1 operate from a single 2.7-V to 18-V supply, drawing a maximum of 1800 μA of supply current. These devices are available in the very small VSSOP-8 package. Specifications for all devices extend over the operating temperature range of -40°C to $+125^\circ\text{C}$.

Key Features

Qualified for Automotive Applications

AEC-Q100 Qualified With the Following Results:

Device Temperature Grade 1: -40°C to 125°C Ambient Operating Temperature Range

Device HBM ESD Classification Level H2

Device CDM ESD Classification Level C3B

Current-Sense Amplifier:

Common-Mode Range: -16 V to +80 V

3.5% Max Error Over Temperature

Bandwidth: 500 kHz (INA200-Q1)

Three Gain Options:

20 V/V (INA200-Q1)

50 V/V (INA201-Q1)

100 V/V (INA202-Q1)

Integrated Open-Drain Comparator

Latching Capability

0.6-V Internal Voltage Reference

Quiescent Current: 1800 μ A (Max)

Latch-Up Exceeds 100 mA per JESD78

Package: VSSOP-8

Recommended For You

INA3221AIRGVR

Texas Instruments, Inc

VQFN16

INA200AQDGKRQ1

Texas Instruments, Inc

MSOP8

INA196AIDBVT

Texas Instruments, Inc

SOT23-5

INA220AIDGSR

Texas Instruments, Inc

MSOP10

INA198AQDBVRQ1

Texas Instruments, Inc

SOT23-5

INA228AQDGSRQ1

Texas Instruments, Inc

VSSOP-10

INA237AQDGSRQ1

Texas Instruments, Inc

VSSOP10

INA168QDBVRQ1

Texas Instruments, Inc

SOT23-5

INA226AQDGSRQ1

Texas Instruments, Inc

VSSOP10

INA3221AQRGVRQ1

Texas Instruments, Inc

QFN16

INA195AIDBVR

Texas Instruments, Inc

SOT23-5

INA197AIDBVT

Texas Instruments, Inc

SOT23-5

INA213AQDCKRQ1

Texas Instruments, Inc

SC70-6

INA300AQDGSRQ1

Texas Instruments, Inc

VSSOP-10

INA196AIDBVR

Texas Instruments, Inc

SOT23-5